

# Shipyard Teaser





# DÜZGİT YALOVA SHIPYARD



## SHIP & BOAT BUILDING INDUSTRY TECHNICAL DOCUMENTATION

### Düzgıt Yalova Shipyards and Steel Works

Düzgıt Yalova Shipyard is located within the new shipbuilding industrial area of Altınova-Yalova, which is about 1.5 hours of driving from Istanbul. Yalova Shipbuilding Industrial Area is one of the biggest shipbuilding areas of Turkey. Düzgıt Yalova Shipyard's whole infrastructure, engineering and related applications were made according to the most advanced technologies including vibrex ground piling and concrete works.

### Shipyard Main Specifications

|  |  |
|--|--|
| Shipyard Area                                      | Abt.52 000 m2                                  |
| Steel Workshop                                     | Abt. 1400 m2                                   |
| Steel Production Capacity                          | Abt.15.000 tons /year                          |
| Maximum Size of Vessel which can be built          | 160 mt length or abt.30000 dwt                 |
| Slipways   | 1 x 130 x 20 m (%1,5)<br>1 x 160 x 45 m (%1,5) |
| Pier For Out - Fittings After Launching            | 1 x 45 mt with 4,5 m draft                     |
| Steel Outfitting Workshop (Outer dim. - L x B x H) | 480 m2 / 30 m x 16 m x 23 m                    |
| Closed Warehouse                                   | Abt. 960 m2 / two storey                       |
| Daily Closed Warehouse                             | Abt. 100 m2                                    |
| Various Workshops                                  | Abt. 1.200 m2                                  |
| Warehouse for paint stocks                         | Abt. 200 m2                                    |
| Offices and Other Spaces ( incl.archive )          | Abt. 3 000 m2                                  |
| Galley And Dining Hall                             | Abt. 800 m2                                    |
| Sanitary Spaces                                    | Abt. 400 m2                                    |
| Dedicated Garbage Collection Area                  | Abt. 500 m2                                    |
| Open Storing Area (for Steel Plates And Profiles)  | Abt. 9.000 m2                                  |



# DÜZGİT YALOVA SHIPYARD

## INDOOR & OUTDOOR CRANES

| NO | Definitions     | Q'ty | Span  | Travelling speed |
|----|-----------------|------|-------|------------------|
| 1  | 2 x 50 t portal | 1    | 23 MT | 23 m/min.        |
| 2  | 2 x 30 t portal | 2    | 23 MT | 23 m/min.        |
| 3  | 10 t overhead   | 1    | 21 MT | 21 m/min.        |
| 4  | 8 t portal      | 2    | 21 MT | 22 m/min.        |
| 5  | 12 t overhead   | 1    | 16 MT | 21 m/min.        |
| 6  | 15 t overhead   | 1    | 16 MT | 21 m/min.        |
| 7  | 6 t overhead    | 1    | 16 MT | 16 m/min.        |

## OTHER FIXED ASSETS

| NO | Definition                             | Q'ty | NO | Definition  | Q'ty          |
|----|--|------|----|---|---------------|
| 1  | Forklift KOMATSU - 7 t                 | 1    | 13 | Lifting magnet 2 t                                      | 1             |
| 2  | Air Compressor - KOMSAN 500LT*15 bar   | 1    | 14 | Gate and personel security system                       | 1 set         |
| 3  | Air compressor - TORNADO 500LT x10 bar | 1    | 15 | Indoor & Outdoor Camera monitoring systems              | 45 pcs. 1 set |
| 4  | 3D Total Station - SOKIA               | 1    | 16 | Fire Pump –multipurpose STANDART POMPA SNT20-50 / K415Q | 1             |
| 5  | 2D Nivo                                | 2    | 17 | Welding mach. Tig type ( ESAB )                         | 3             |
| 6  | Truck - IVECO truck 7 T                | 1    | 18 | Bevelling mach.   | 2             |
| 7  | Renault fluence 2010                   | 1    | 19 | Welding mach. Mig / Mag type (ESAB, LINCOLN)            | 27            |
| 8  | Generator 64 kVa PERKINS               | 1    | 20 | Welding mach. Electr. Type ( ESAB / LINCOLN )           | 68            |
| 9  | CNC cutting 3,5 x 24 mt PROTEM         | 1    | 21 | Welding mach. Arc type (KILMAK)                         | 2             |
| 10 | PC & Teleph. network for 24 users      | 1    | 22 | Welding mach. TIG (ESAB)                                | 1             |
| 11 | Lifting magnet 10 t                    | 1    | 23 | Welding mach. Alum. ( ESAB )                            | 3             |
| 12 | Radial drilling mach.                  | 1    | 24 | Miscell. necessary steel construction tools & jigs      | 3 sets        |



# DÜZGİT YALOVA SHIPYARD

## Duzgit Shipyard Overview

- Shipyard is located in the center of Altinova (Yalova), one of the main shipyard destinations of Turkey and is only 1 km. to the recently opened Osman Gazi Bridge, hence very close to Istanbul.
- App. Usd 20 Mio investment has been undertaken until today most of which is comprised of subfloor capital expenditures (replacement cost method i.e.).
- The shipyard currently has a capacity of up to 25,000 DWT ship construction.
- The latest construction project was in regards to a 16,000 DWT chemical tanker which was completed in June, 2014.
- Shipyard company is a subsidiary of a big group in Turkey operating in ship management, duty free & bond store facilities.
- There is no fixed rental cost, but rather the rent is determined as 0.1% of the income.

## Investment Rationale

- Surrounded by sea on three sides, Turkey is a natural bridge between Asia and Europe
- Shipbuilding is a 600-year old tradition in Anatolia where the first shipyard was established in 1390, by the 16th century, Turkish shipyards were already the largest in the world.
- The fifth largest shipbuilding country in the world as of 2014. (Source : Ministry of Economy)
- Operating license period has very recently (Nov 2016) been extended for an **additional 49 years** making the shipyard more attractive for an incoming strategic investor. The shipyard has all the necessary operating permits readily available.
- **Cost Advantage** : Shipping costs have diminished significantly due to exchange rate depreciation, around 45% of the cost of sales comprise costs in Euro due to imports and roughly 1/3 of the total costs of sales belong to labour expenses.

## Shipbuilding Industry in Turkey (Source : Turkish Chamber of Shipping)

- Shipbuilding industry directly & indirectly creates 300,000 people as of today (2016). Number of active employees is 30,000. Turkey is the top second country after China whereby most shipman are trained.
- 416 million tonnes of load & 8.1 million containers in Turkey have been handled by 2015.
- There are 79 shipyards in Turkey as of 2016 (Up from 37 in 2003).
- The quantity of shipyards under construction are 49 by the end of 2014.



# DÜZGİT YALOVA SHIPYARD

## Management Team

- **Salim DÜZGİT (b. 1935) - Chairman** : Founder and Chairman of the Düzgıt Group. Mr. Düzgıt's position within the maritime community is the reflection of the company's position in the sector. His respectable, hardworking and trustworthy personality has been the company's signature of doing business.
- **Recep DÜZGİT (b.1965) - CEO** : After graduating from Bogazici University with a degree in Economics, he gradually became the CEO of Düzgıt Group, the president of the Association of Shipowners and Shipagents (est.1902), board & council member of the Chamber of Shipping as well as holding board positions in the mutual venture companies of Turkish maritime community. He has been working with the company since 1988 and holds a Master's Degree (LLM) in Economics Law as of 2006.
- **Ali DÜZGİT (b.1966) - Board Member** : After graduating from the Istanbul Technical University as a naval architect he became the person in charge of all technical matters of Düzgıt's operations. He has been working with the company since 1988 and was the main person behind several naval & commercial newbuilding projects & tenders that were successfully completed.
- **Metin DÜZGİT (b.1976) - Board Member**: After his graduation from Southampton Institute (Southampton Solent University) with a BSc degree in Shipping Operations, he obtained an MSc degree in Shipping, Trade and Finance at the City University of London (Cass Business School). He joined the company in December 2000 and has been mainly active in financial affairs and ship management.

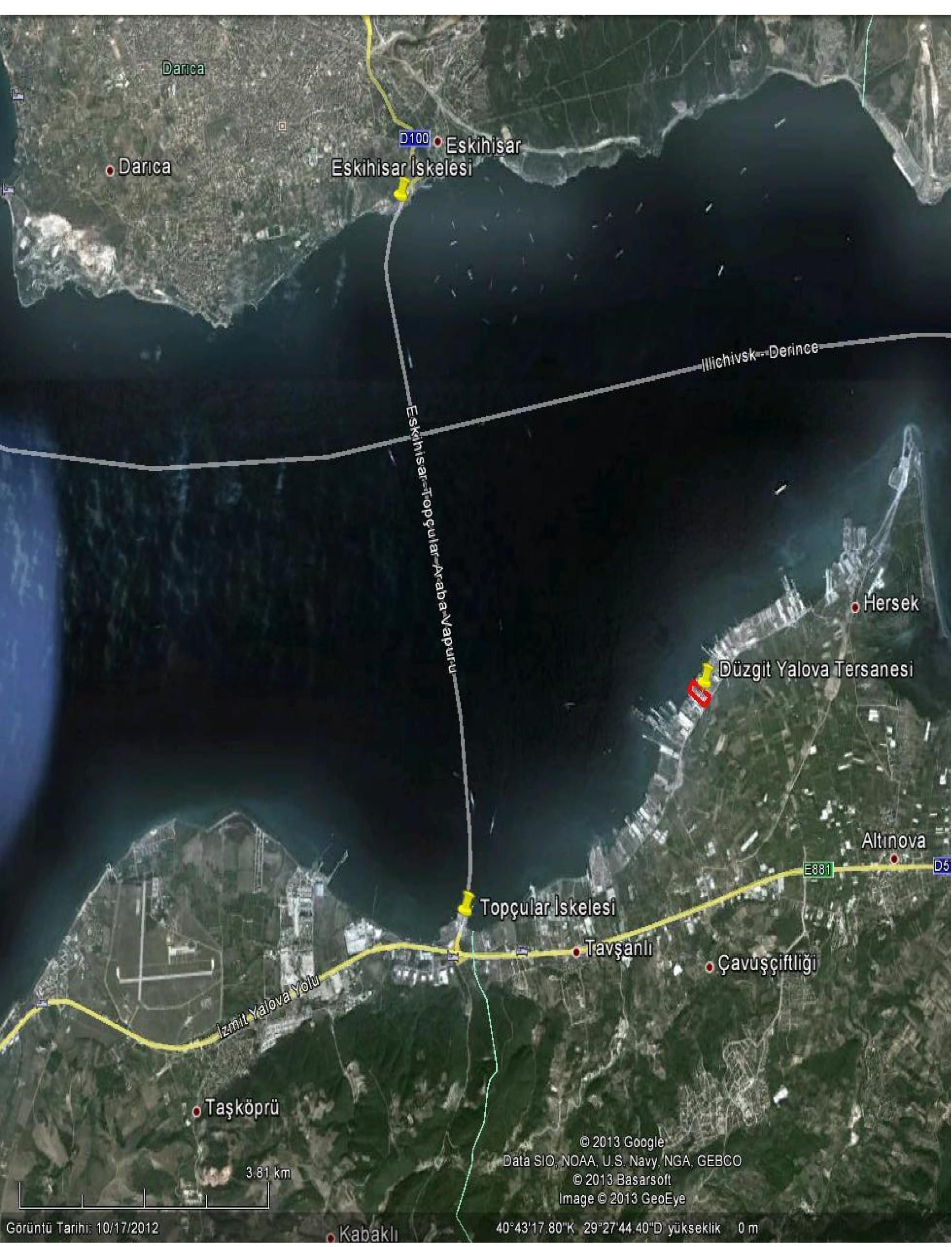
## About Duzgit Group

- Düzgıt Group is one of the oldest and most reputable companies of Turkish maritime sector. Its' history dates back to 1966 when local ship agency office was established in Büyükdere Bay of Strait of İstanbul by Mr. Salim Düzgıt.
- Today, activities within Düzgıt Group range from shipping sub-agency to duty free & bondstore, from ship&boat building to shipowning and ship management.
- The Group has 12 companies in 8 different offices with 235 employees.
- Duzgit Group is currently the owner and the operator of 5 quality chemical/oil tankers in 3-16.000dwt size range which are all built in house.
- **Time Charter clients**: Suncor/PetroCanada, Monjasa, Stena Oil, OMV POAS, Nordic Tankers, Uni-Chartering, Oilchart Offshore
- **Voyage Charter clients**: ExxonMobil, Shell, BP, ENI, Total, Chevron, Lukoil, Repsol, CEPSA, Galp, Neste, KOCH, ERG, Saras, Statoil, KazmunayGas, Ineos
- The Group as well caters ship sub-agency and renders motorboat services to ship agents, ship owners, ship suppliers, oil majors and offshore contractors with a team of about 70 boat crew and 20 operation staff calling on board more than 20.000 ships a year.
- Duzgit Group has a fleet of about 25 various type workboats

## Projects Completed in Duzgit Shipyard

- 6 Workboats of 12-20m LOA
- 8 Naval Training Boats of 29m LOA
- 2 high speed alluminium Patrol Boats of 20m LOA
- 5 electro-diesel propulsion Passenger Ferries of 1800pax cap.
- 10 chemical/oil tanker 3-30.000dwt





Darıca

Darıca

D100

Eskişehir

Eskişehir İskelesi

Illichivsk-Derince

Eskişehir-Topçular-Araba-Vapuru

Hersek

Düzgüt Yalova Tersanesi

Altınova

E881

D5

Topçular İskelesi

Tavşanlı

Çavuşçiftliği

Izmit Yalova Yolu

Taşköprü

3.81 km

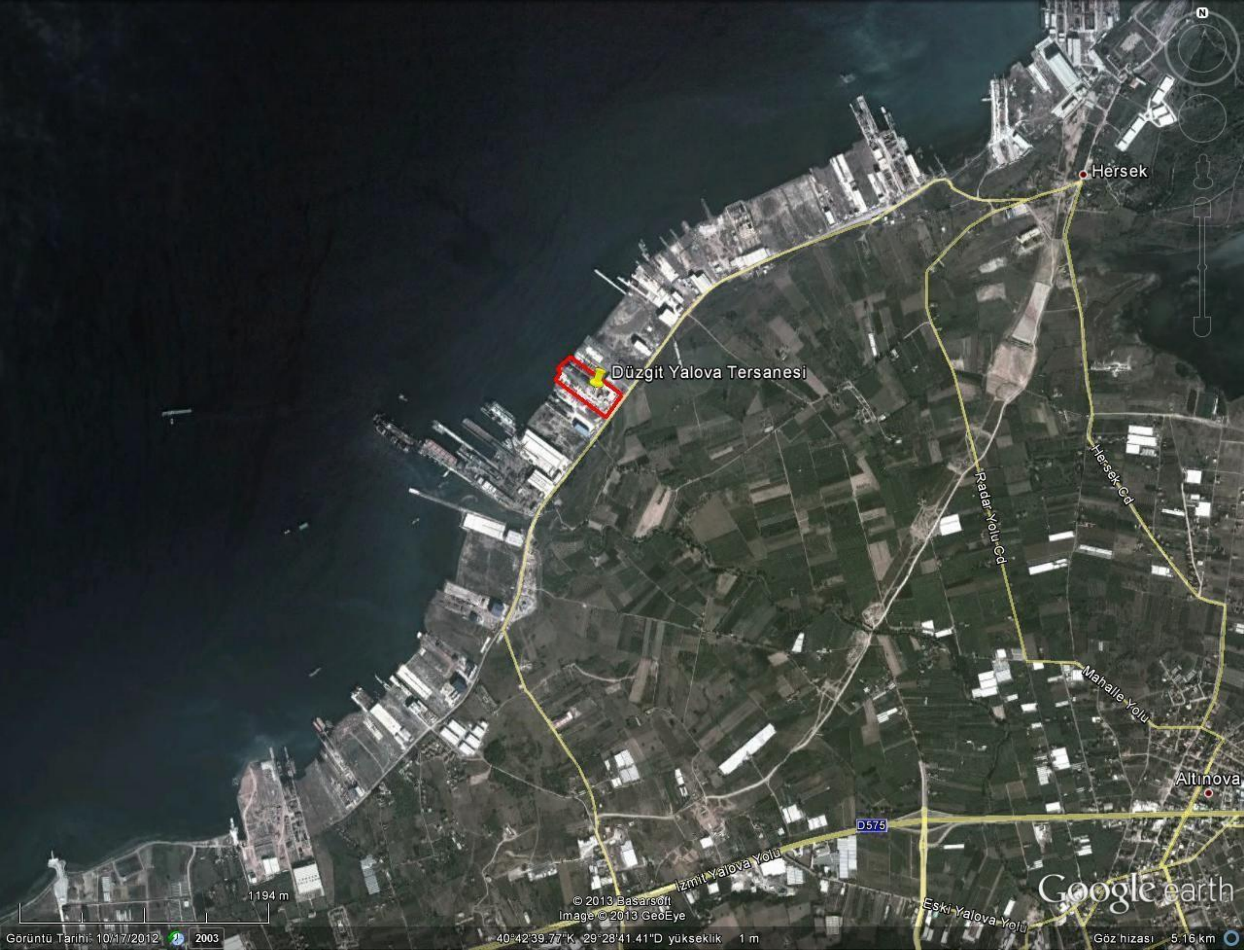
Kabaklı

© 2013 Google  
Data SIO, NOAA, U.S. Navy, NGA, GEBCO  
© 2013 Basarsoft  
Image © 2013 GeoEye

40°43'17.80"K 29°27'44.40"D yükseklik 0 m

Görüntü Tarihi: 10/17/2012





Düzgüç Yalova Tersanesi

Hersek

Altınova

Radar Yolu Cd

Mahalle Yolu

D575

Izmit Yalova Yolu

Eski Yalova Yolu

Google earth

1194 m

© 2013 Başarsoft  
Image © 2013 GeoEye

40°42'39.77"K 29°28'41.41"D yükseklik 1 m

Göz hizası 5.16 km

Görüntü Tarihi: 10/17/2012 2003











